

# Functional Framework

The Village of Mahomet is bisected by the Sangamon River, large areas of forest preserve, a railroad, and two highways. These elements have segmented the Village into several distinct areas, each characterized by a unique mix of land uses.

These distinct areas of the Village are well-established and serve to inform planning recommendations. The framework concept provides guidance for future planning and development in the Village by recognizing the desirable elements of Mahomet's existing character areas and using those elements as seeds for future growth.

**Legend**

Commercial Core

Middletown

West Mahomet

Southwest Mahomet

North & South IL 47 Gateways

East Village

Northeast Mahomet

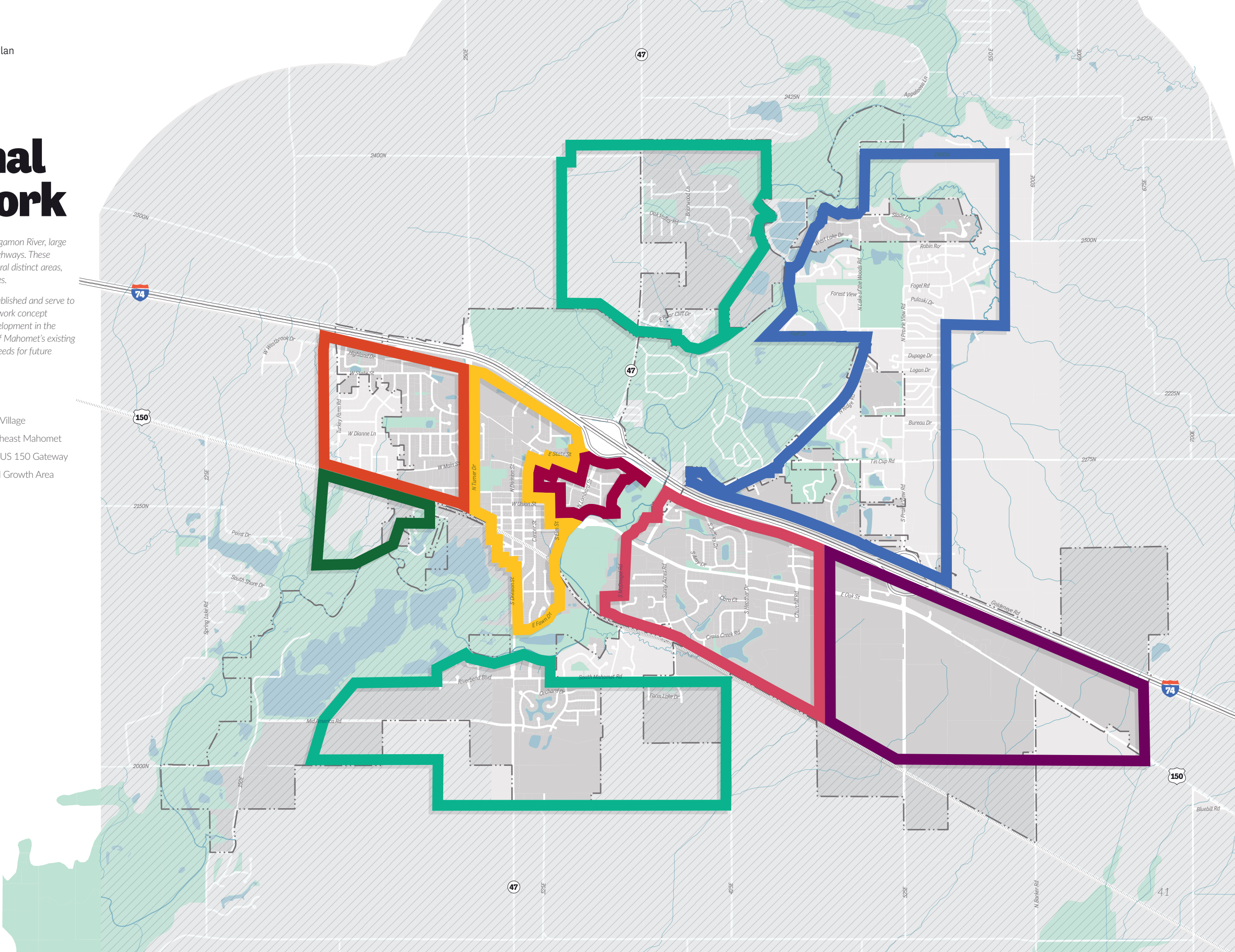
East US 150 Gateway

Rural Growth Area

Hydrology/Floodzones

Railroad

Municipal Limits



# Future Land Use

The Land Use and Development Plan establishes a framework for future planning decisions that builds upon the desired characteristics of the Village's established residential neighborhoods and commercial areas. The Plan establishes land use designations for all areas of the Village and its planning jurisdiction and identifies strategies for addressing issues and maximizing the positive impact of each development type.

Building on Mahomet's existing patterns of development, the goal of the Land Use and Development Plan is to enhance the Village's existing residential neighborhoods and commercial areas while strengthening Mahomet's image within the region and continuing to attract new families and businesses to the community. Furthermore, the Plan strives to foster a compatible land use and development pattern that promote reinvestment in Downtown Mahomet.

- Legend
- Agriculture

Single Family Detached Residential

Two-Family / Small Lot Residential

Multi-Family Residential

Rural Residential

Neighborhood Commercial

Corridor Commercial

Downtown Commercial

Light Industrial

Industrial / Business Park

Institutional

Parks & Open Space
- Hydrology

Railroad

Municipal Limits
- 
- Land Use & Development